

ORIGINAL INSTRUCTIONS TRANSLATED ENGLISH EDITION,
VERSION 02, APPLICABLE FROM 1 January

HIGH LIFTER

MANUAL, SEMI-STAINLESS

OPERATING INSTRUCTIONS
MAINTENANCE MANUAL
PARTS CATALOGUE
DECLARATIONS OF CONFORMITY



HIGH LIFTER - MANUEL, SEMI-STAINLESS

BASIC INFORMATION

Manufacturer: Ole Almeborg a/s, Svalhøjvej 15, DK-3790 Hasle, Denmark, tel. +45 5693 3600
Designation: High Lifter, manual, semi-stainless steel, type OA/116.
Lifting capacity: 1,000 kg
Net weight: 122 kg

RECEIVING THE PRODUCT

On receipt of the product, it is important to inspect it immediately for any signs of damage that may have occurred in transit. If any damage is discovered, contact the distributor or supplier and do not use the high lifter until the distributor or supplier has been notified about the damage and the extent of it.

MALFUNCTION AND DAMAGE

In the event of any malfunction or damage to the high lifter, contact the supplier or the distributor.

NOTE:

For safety reasons, all service and maintenance must be performed by a technician certified to do so.

BEFORE USING THE PRODUCT

The manual must be read and understood by the operator before he/she starts to use the high lifter, as it is crucial for the operator to be familiar with the high lifter's function, capacity and loading methods.



WARNING!

If the precautions specified are not followed, there is a risk of accidents which may entail severe bodily injury and could possibly be fatal.

TRANSPORTING THE HIGH LIFTER

To lift the high lifter, attach authorized lifting equipment to the front crossbar or upper section. The lifting must be balanced by attaching straps to the fork tips. Note that, when lifting the high lifter, the plunger shaft can be extended to its maximum length. This will not damage the high lifter. For transporting the High Lifter on a lorry, it is recommended that the truck be attached to an EUR-pallet.

HIGH LIFTER - MANUEL, SEMI-STAINLESS

SAFETY EQUIPMENT

Safety footwear must always be worn when using the high lifter. For service and repair, safety goggles/glasses must also be worn.

The operator must not wear loose objects such as necklaces, finger rings, a scarf, etc., as these can get caught in the High Lifter, thereby exposing the operator to danger.
The high lifter may be used for transporting pallets in an ordinary production environment.

PRODUCT DESCRIPTION

The high lifter is described as a high lifter designed for transporting EUR-pallets.

The high lifter is designed for use in an ordinary production environment. The floor must be hard and level, e.g. concrete or asphalt.

The user must make sure that the floor can support the high lifter, including with its total maximum load.

USING THE PRODUCT

Permitted utilisation:

The high lifter may be used for transporting pallets in an ordinary production environment.

Unacceptable utilisation:

The high lifter may not be used as a scooter or for transporting people.

The high lifter is stable on a level surface, but may not be used on angled surfaces where there is a risk that it could slide or tip over. In addition, the high lifter may not be used in very cold areas or in areas exposed to high temperatures as this could cause the pump to malfunction, thus exposing the operator or other people to danger.

HANDLING AND START-UP

Before using the high lifter, it is important for the operator to read and understand the user instructions.



OPERATOR'S POSITION

The operator must always position himself/herself in front of the towbar both during transport and when operating the pump.

HIGH LIFTER - MANUEL, SEMI-STAINLESS

OPERATING INSTRUCTIONS:

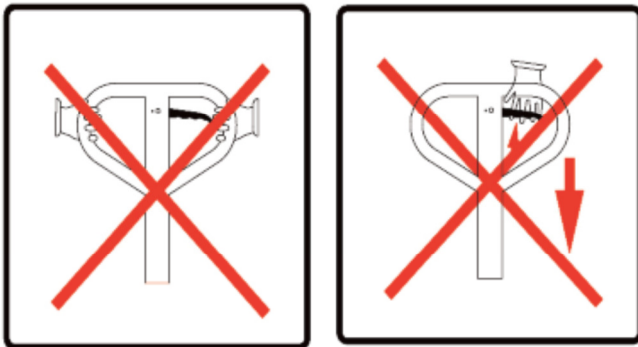
The high lifter's towbar is also used as a pumping bar. A built-in valve enables the towbar to be placed in the desired position simply by slowly moving this.

If the operator wishes to lift the load, the towbar must be pumped quickly. If the operator wishes to lower the load, pull carefully on the towbar's release lever, which activates this function. The adjustment of the lowering function is continuously variable. The upper section has been added to the drawing shown here, to indicate the above functions.



WARNING FOR OPERATING THE RAISING/LOWERING FUNCTION

There is a risk of being crushed under forks and pallets. Make sure that no one else is nearby when lowering the high lifter. Always position your hands on the top of the handle when operating the high lifter and always use both hands to operate.



WHEN THE HIGH LIFTER IS NOT IN USE

Always park the high lifter with the forks in the lowest position. Always park the high lifter on an even, level surface to prevent it from unintentionally rolling into areas where it could endanger other people.

HIGH LIFTER - MANUEL, SEMI-STAINLESS

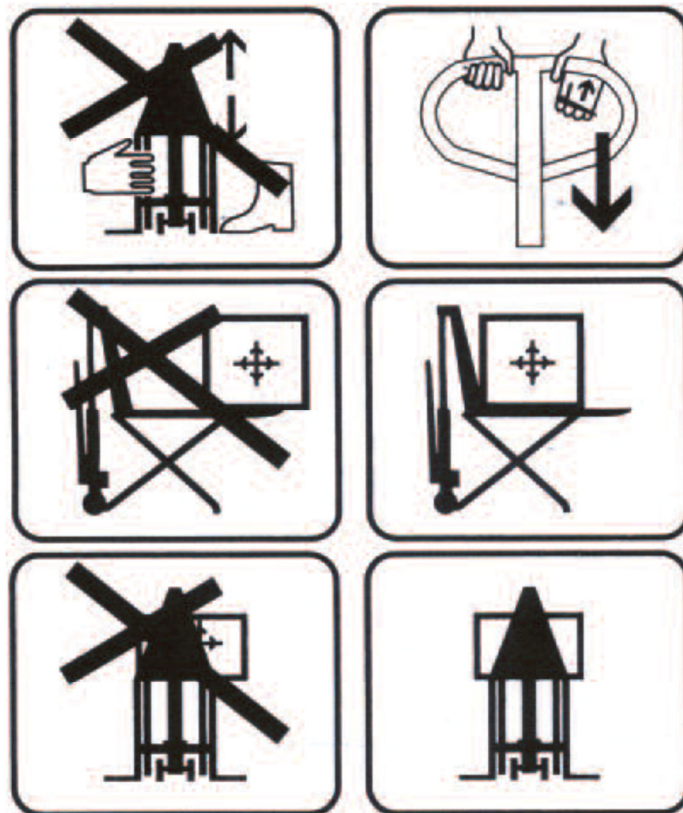


WARNING DURING OPERATION

Check to see whether anyone is in the area where you are planning to use the high lifter.

THE LOAD

- Know and be aware of the weight of the load and how it is positioned, to ensure that the maximum load limit is not exceeded.
- Make sure the load is stable and correctly positioned on the forks.
- The high lifter may only be operated with a load if the load is stable and secured, so that any loose objects cannot fall off.
- Do not convey tall loads on the high lifter.
- Be aware of the condition of the floor surface, i.e. whether it is even and smooth, whether there is an incline or a decline, as failing to observe this could cause a dangerous situation.
- Do not operate the high lifter on catwalks or other unstable surfaces.
- Avoid high speeds when turning.



HIGH LIFTER - MANUEL, SEMI-STAINLESS

INSPECTION AND MAINTENANCE



WARNING!

During service and maintenance, there is a risk of being crushed by movable parts of the high lifter. Be sure to correctly chock the high lifter in a stable location while servicing it, to prevent sudden movements of the high lifter.

DAILY INSPECTION

For safety reasons, the operator should inspect the high lifter on a daily basis for wear and damage. Special attention is drawn to the following components:

- Loose axles caused by damaged bolts, nuts or tubular pins
- Ruptures or cracks in the chassis
- Ruptures or cracks in the towbar
- Bent scissors
- Wheels and auxiliary rollers must be intact and must be able to rotate freely
- Make sure no cloths, strip waste or other items are wound around the hub of the wheel or auxiliary rollers

WEEKLY INSPECTION

For continuous operation, all movable parts should be inspected and lubricated with SAE 30 motor oil at least once a week. Ordinary bearing grease should be injected into the lubrication points equipped with a grease nipple.

MONTHLY INSPECTION

Check the level of oil in the hydraulic system once a month. If the pump lacks oil, this is usually discovered from oil residue on the high lifter or when the high lifter cannot be pumped up to the top position.

OIL

The hydraulic system contains 1.5 liters of oil. Replenish with oil at the top of the pump housing. At temperatures between -35°C and $+40^{\circ}\text{C}$, use oil certified to ISO 32 with a viscosity index of at least 150.

LUBRICATING THE TOWBAR

On the towbar, lubricate the release chain, the pin on the release lever and the pin at the lowering valve lever.

HIGH LIFTER - MANUEL, SEMI-STAINLESS

INSPECTION AND MAINTENANCE PLAN

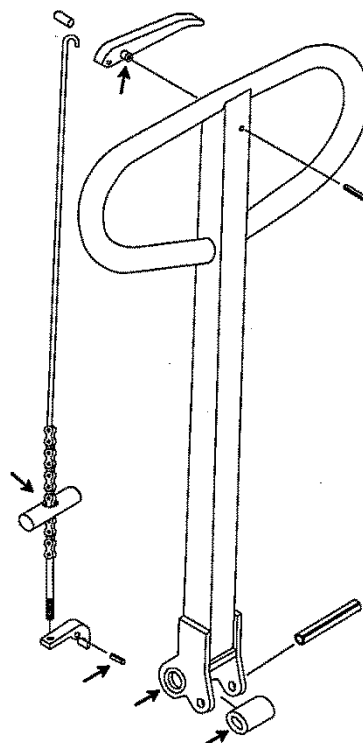
	Daily	Weekly	Monthly
Cleaning	•		
Inspect for damage and ruptures	•		
Lubrication		•	
Oil level, pump			•

LUBRICATING THE PUMP TOWBAR

NOTE:

To achieve correct lifting and lowering, the chain drive in the towbar must be preset so there is 0.4 mm (± 0.1 mm) between the release pin and the lowering-valve lever, regardless of where the towbar is positioned.

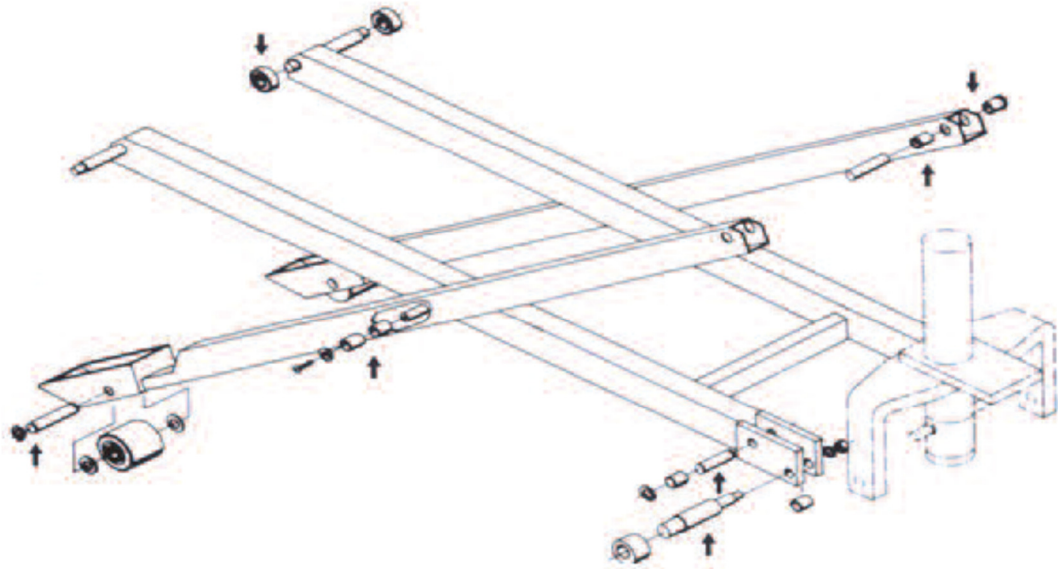
Oil lubrication →



HIGH LIFTER - MANUEL, SEMI-STAINLESS

LUBRICATING THE SCISSOR-LIFT ASSEMBLY

Oil lubrication→
Grease lubrication→



CLEANING

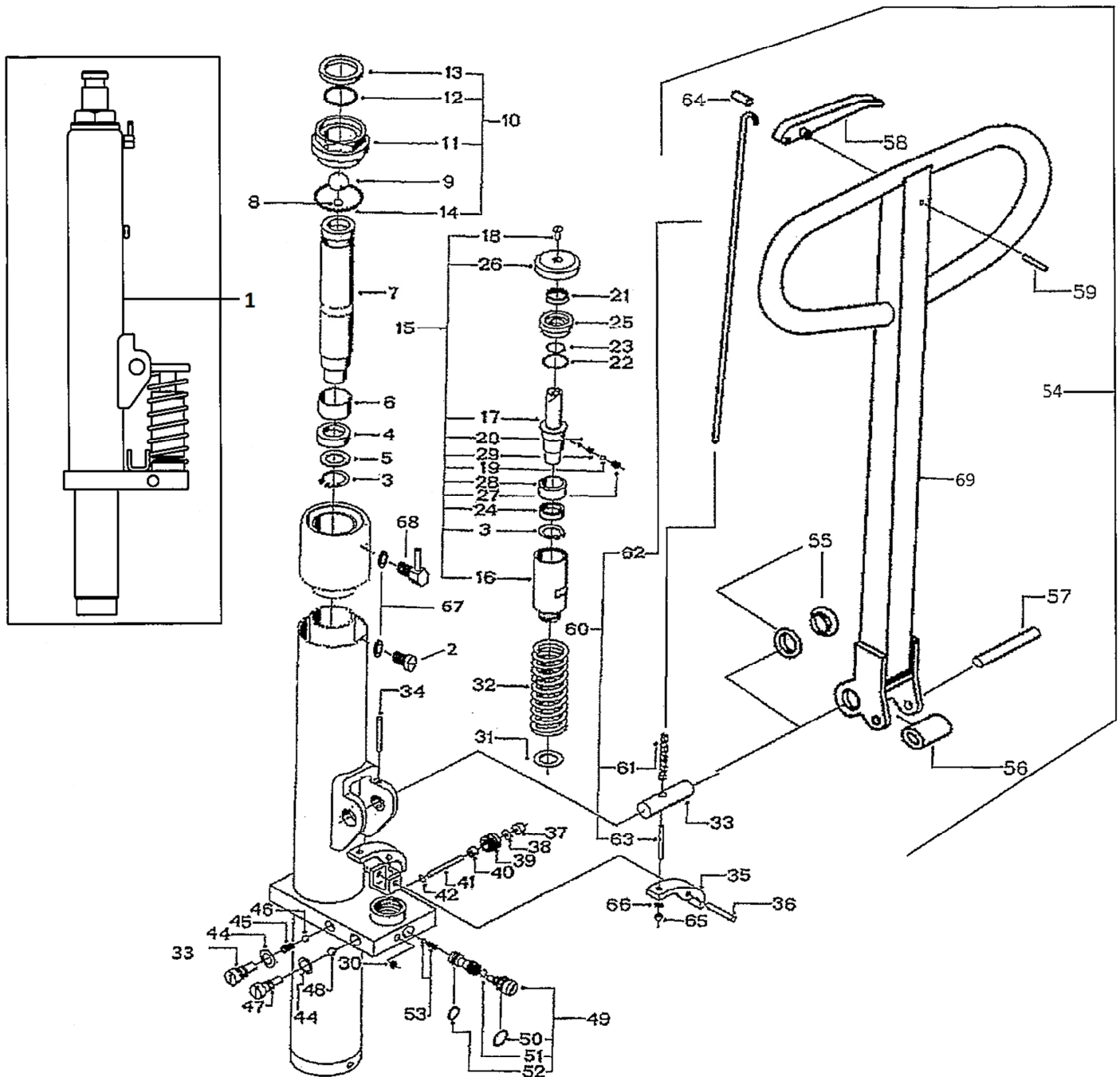
The environment in which the high lifter is used determines the cleaning frequency. It is recommended to assess the need for cleaning based on the current rules in the company. The high lifter can be cleaned with warm water and automobile detergent or similar. After cleaning, wipe down the truck and lubricate the movable parts (see the section concerning maintenance and lubrication).

DISPOSING OF THE HIGH LIFTER

The high lifter must be disposed in accordance with applicable rules at the time of disposal. Contact your local environmental station for further details, if necessary.

THE HIGH LIFTER CONTAINS THE FOLLOWING MATERIALS

- Chassis: stainless steel
- Towbar: stainless steel
- Scissors: hot-dip galvanised steel
- Wheels: nylon, polyurethane or rubber
- Bearings: stainless chrome steel
- Bushings: polyacetal, nylon, brass
- Pump housing: metallised steel, hydraulic oil, polyacetal, nylon, copper, stainless steel, polyurethane and nitrile rubber.



HIGH LIFTER - MANUEL, SEMI-STAINLESS

PARTS LIST FOR HIGH LIFTER, MANUAL, SEMI-STAINLESS STEEL MODEL:

PUMP ASSEMBLY

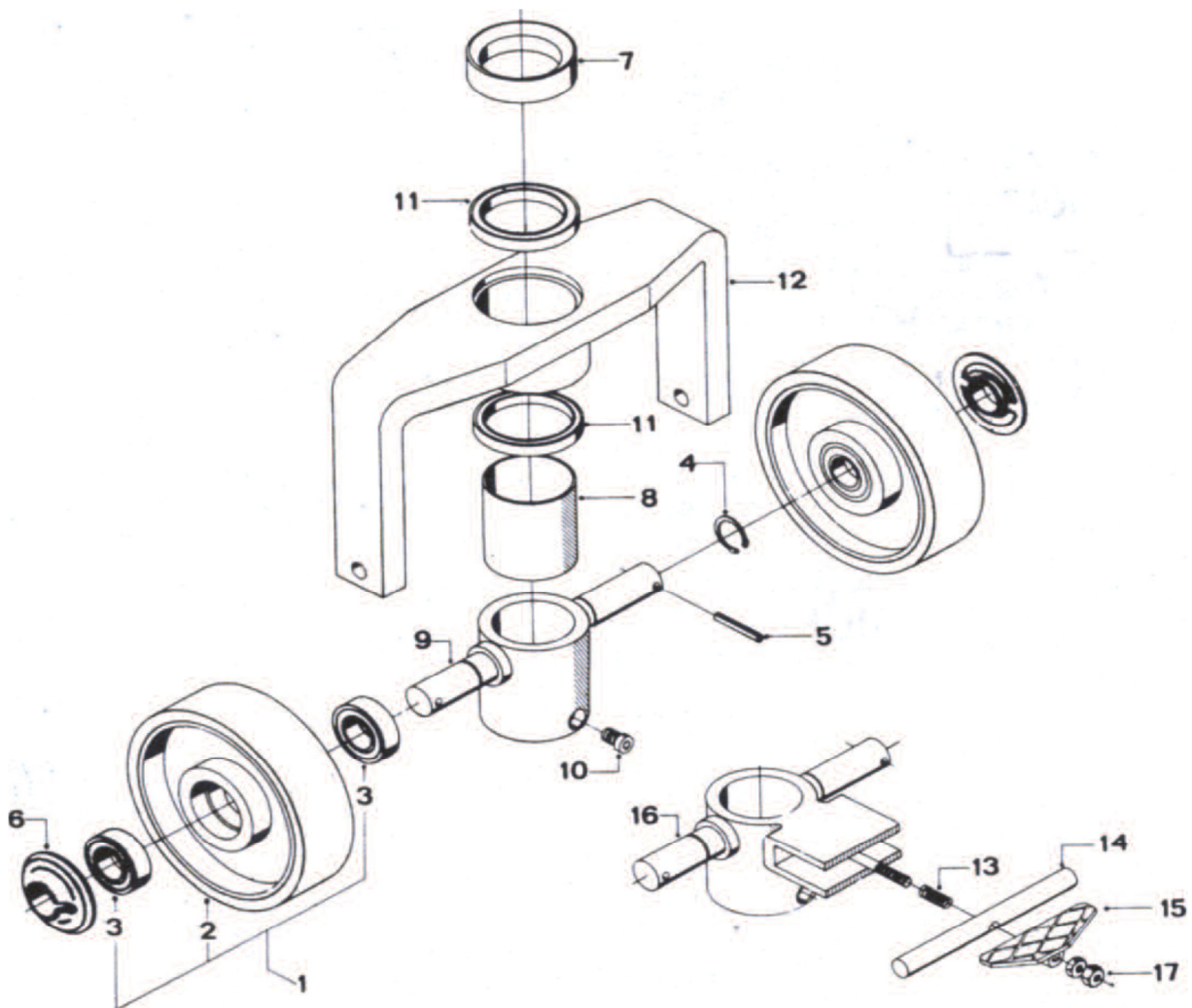
Item	Item no.	Qty	Designation
1	11.15-50.240	1	Pump assembly with valves and pistons
2	400.030	1	Oil plug
3	402.104	2	Lock ring
4	11.15-50.101	1	Packing
5	11.15-50.102	1	Support ring
6	456.008	1	Bushing
7	11.15-50.093	1	Piston
8	451.051	1	Ball, Ø 12 mm
9	451.047	1	Ball, Ø 1"
10	622.131	1	Union nut, completet
11	NSS		
12	452.045	1	O-ring
13	452.098	1	Oil scraper ring
14	452.065		O-ring
15	11.15-50.131	1	Pump cylinder, complete +Cupperring
16	11.15-50.339	1	Pump cylinder
17	11.15-50.022	1	Pump piston
18	400.521	1	Screw
19	451.050	1	Ball, Ø 6 mm
20	451.053	1	Ball, Ø 4 mm
21	452.060	1	Oil scraper ring
22	452.079	1	O-ring
23	452.080		O-ring
24	452.081	1	U-sleeve
25	11.15-50.340	1	Union nut
26	11.15-50.078	1	Washer
27	11.15-50.024	1	Spring
28	11.15-50.025	1	Brass ring
29	11.15-50.027	1	Spring
30	452.101	1	Expander
31	452.049	1	Copper ring
32	11.15-50.079	1	Spring
33	412.132	1	Axle
34	402.170	1	Pin
35	502.193	1	Lowering valve lever
36	402.151	1	Pin
37	452.051	1	Rubber bushing
38	401.142	1	Washer
39	400.063	1	Valve screw
40	452.042	1	U-sleeve
41	410.059	1	Release pin
42	452.076	1	Cloverleaf ring
43	400.200	1	Collar screw

HIGH LIFTER - MANUEL, SEMI-STAINLESS

Item	Item no.	Qty	Designation
44	452.047	2	Ring
45	403.039	1	Valve spring
46	451.046	1	Bearing, Ø 8 mm
47	400.215	1	Collar screw
48	451.044	1	Ball, Ø 9 mm
49	622.152	1	Neutral position valve
50	11.15-50.017	1	O-ring
51	NSS	1	Ball, Ø 7 mm
52	452.097	2	O-ring
53	622.155	1	Chamber and spring
54	622.333	1	Towbar completet
55	457.030	2	Bushing
56	436.020	1	Roller
57	402.166	1	Pin
58	405.017	1	Release lever
59	28569	1	Pin
60	622.314	1	Chain, complete
61	402.215	1	Chain
62	66636	1	Valvebar, long
63	413.059	1	Threaded rod, short
64	165194	1	Tube
65	400.207	1	Nut
66	401.140	1	Flat washer
67	11.15-50.291	2	Sealing
68	11.15-50.285	1	Valve plug
69	597.065	1	Towbar welded Machined
	11.15-50.231	1	Washer set
*			NSS = Not sold separately

HIGH LIFTER - MANUEL, SEMI-STAINLESS

PARTS LIST FOR HIGH LIFTER, MANUAL, SEMI-STAINLESS STEEL MODEL: STEERING COLUMN



HIGH LIFTER - MANUEL, SEMI-STAINLESS

RESERVEDELISOVERSIGT – MANUEL HØJTLØFTER, SEMI-STAINLESS STEEL MODEL: PUMPESAMLING

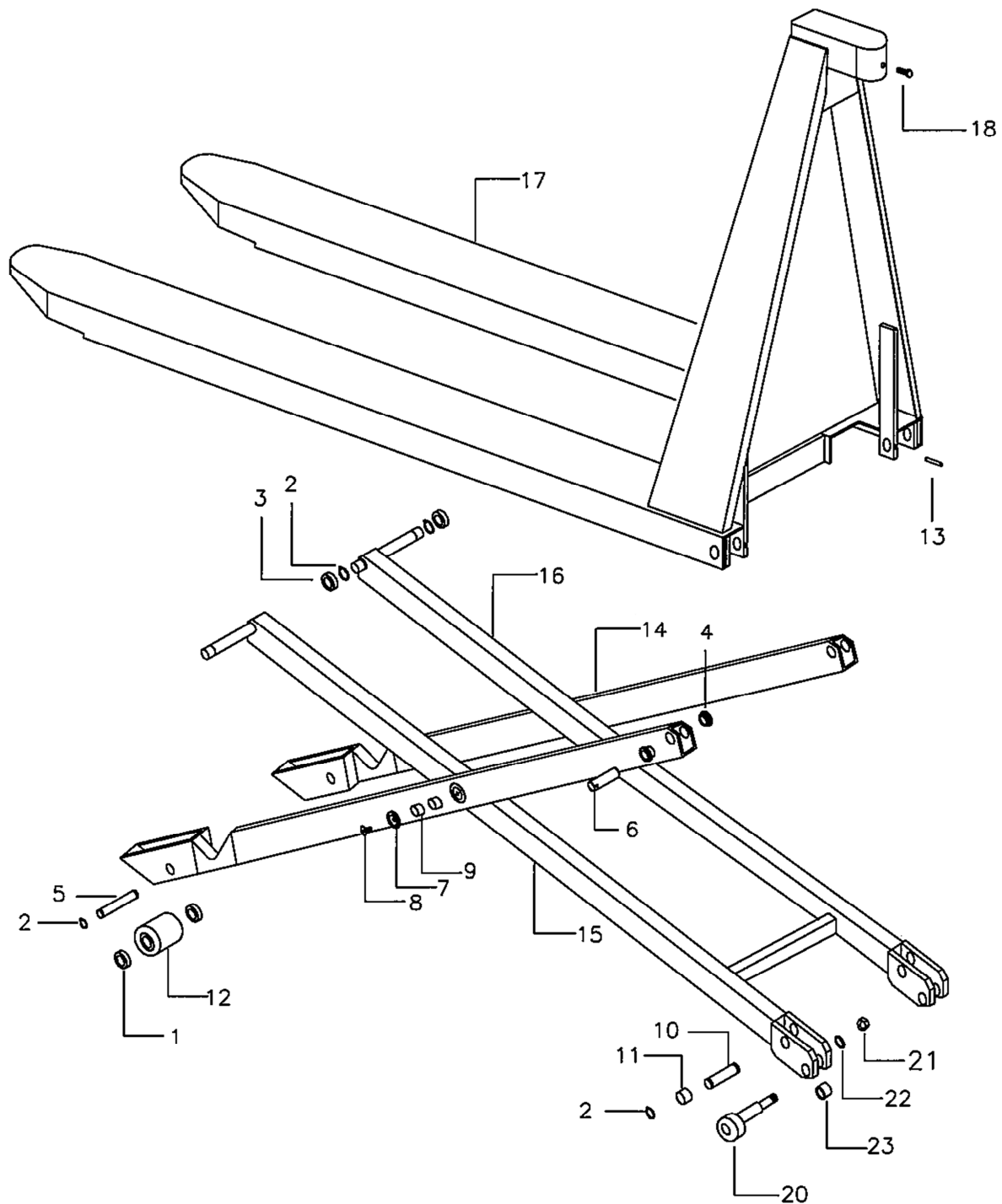
Item	Item no.	Qty	Designation
0	04.02-50.048	1	Steering column, complete
1	315.012	2	Poly wheel, bearings included
2	NSS	2	Poly wheel
3	451.062	4	Ball bearing
4	04.02-50.037	2	Lock ring
5	402.169	2	Pin
6	440.710	2	Stop ring
7	04.02-50.004	1	Spacer ring
8	04.02-50.001	1	Spacer ring
9	04.02-50.053	1	Steering column
10	04.02-50.055 +	2	Bolt and washer
	04.02-50.012		
11	04.02-50.104	2	Ball bearing
12	04.02-50.044	1	Chassis

ACCESSORIES

Item	Item no.	Qty	Designation
	07.02-50.030		Footbrake, complete
13	07.02-50.002	1	Spring
14	07.02-50.026	1	Axle
15	07.02-50.027	1	Brake pedal
16	07.02-50.109	1	Steering column
17	400.244	2	Nut
			NSS = Not sold separately

HIGH LIFTER - MANUEL, SEMI-STAINLESS

PARTS LIST FOR HIGH LIFTER, MANUAL, SEMI-STAINLESS STEEL MODEL: SCISSORS AND STABILISER



HIGH LIFTER - MANUEL, SEMI-STAINLESS

PARTS LIST FOR HIGH LIFTER, MANUAL, SEMI-STAINLESS STEEL MODEL: SCISSORS AND STABILISER

Item	Item no.	Qty	Designation
0	14.05-50.322	1	Scissor lift assembly, 560
1	401.138	4	Flat washer
2	14.05-50.040	8	Lock washer
3	451.061	4	Ball bearing
4	456.024	4	Bushing
5	14.05-50.063	2	Axle
6	14.05-50.043	2	Axle
7	14.05-50.065	2	Tie washer
8	14.05-50.041	2	Screw
9	14.05-50.013	4	Bushing
10	14.05-50.046	2	Axle
11	14.05-50.016	2	Bushing
12	365.044	2	Nylon roller
13	14.05-50.064	2	Pin
14	14.05-50.316	1	Scissor lift section, left
15	14.05-50.317	1	Scissor lift section, right
16	14.05-50.296	1	Scissor lift, welded 560
17	14.08-50.292	1	Frame, welded joint 560
18	400.210	1	Bolt
20	201.01-50.025	2	Stabiliser
21	201.01-50.027	2	Nut
22	201.01-50.028	2	Washer
23	201.01-50.024	2	Bushing
			NSS = Not sold separately

HIGH LIFTER - MANUEL, SEMI-STAINLESS

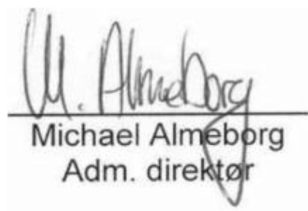
COMPLIANCE STATEMENT:

EU DECLARATION OF CONFORMITY, ENGLISH VERSION (UK)

The undersigned – Ole Almeborg a/s, Svalhøjvej 15, DK-3790 Hasle, Denmark, tel. (+45) 5693 3600, www.almeborg.com – hereby declares that this machine has been manufactured in conformity with the relevant provisions of the Machinery Directive, 2006/42/ec, of 17. May 2006.

Product name: High Lifter
Model: standard, manual, semi-stainless
ID no.: OA-116-XXX

Surname: Almeborg
First name: Michael
Position: Director
Hasle, Bornholm, DK / 1. January 2016



Michael Almeborg
Adm. direktør

